

SHARP

MX-3100N MX-2600N

Digital Full Colour Multifunctional System



Designed for High Efficiency, Stunning
Image Quality, and Solid Security



COPY

NETWORK PRINT

NETWORK SCAN

SHARPEDESK

FAX
OPTION





Fast, Quality Performance from a Safeguarded Solution

Sporting an impressive array of original, cutting-edge technologies in a compact frame and a new design, the MX-3100N/2600N all-in-one colour MFP from Sharp offers outstanding speed, print quality, and data protection.

The MX-3100N/2600N handles copy/print jobs for both colour and B/W documents at speeds of up to 31/26 pages per minute, and 1,200-dpi resolution ensures that the print quality is every bit as high as the output is fast. The MX-3100N/2600N's integrated document management system brings efficiency into the picture with workflow-enhancing functions. And Sharp OSA (Open Systems Architecture) 3.0 clears the way for third-party software developers to create customised applications for office-specific control and convenience.

To safeguard confidential data, the MX-3100N/2600N employs Sharp's powerful, industry-leading security solutions in a multi-layered approach that protects against data leakage and unauthorised access.

New Design Brings Style and Ease of Use

A new dark-coloured control panel gives the MX-3100N/2600N a distinct design advantage and brings polished chic to office settings. But this stylish new design does more than just enhance décor; it also makes the MX-3100N/2600N a particularly user-friendly solution. The new 8.5-inch, W-VGA, touch-screen LCD control panel gives users a choice of six screen colours and provides thumbnail display and previews of data files as well as system/job status display, making even the MX-3100N/2600N's most advanced functions easy to navigate.





COPYING & NETWORK PRINTING

PRODUCTIVE

Super-Efficient Colour and B/W Output COPY PRINT

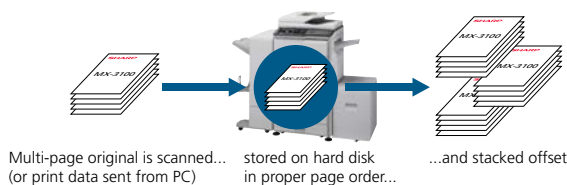
The tandem printing engine with four in-line drums helps the MX-3100N/2600N deliver a fast output of **31/26 cpm/ppm*** in full colour and in B/W. And the first copy comes out in just **8.9 seconds** in full colour and **6.0 seconds** in B/W. What's more, its short, straight paper path minimises misfeeds to save you paper and toner costs.

* A4 (8 1/2" x 11"), long-edge feeding



Productive Collated Output from Memory COPY PRINT

The MX-3100N/2600N's Scan Once/Print Many function only requires a single scan of a multi-page original for copying, and the RIP Once/Print Many function only needs to download print data once from the PC for printing. The machine then automatically saves the data into memory and outputs **collated** sets of copies or printouts in the proper page order (electronic sorting), with each set **offset stacked** for easier retrieval.



Built-in Stackless Duplex Module and RSPF COPY PRINT

The MX-3100N/2600N can make **two-sided copies and printouts** using its built-in stackless duplex module, effectively reducing paper costs as well as saving filing space. Duplex copying is even more effective when used together with the standard-equipped **100-sheet RSPF** (reversing single pass feeder), which efficiently feeds in either one- or two-sided originals.

Job Build for Large-Volume Scanning COPY

The MX-3100N/2600N easily handles large-volume copy jobs exceeding the RSPF's 100-sheet*1 capacity. For example, a 270-sheet original can be scanned as batches of 100 + 100 + 70 sheets and automatically stored on the MX-3100N/2600N's hard disk*2. Users can then print the entire document in a single run.

*1: A4 (8 1/2" x 11"), 80 g/m²

*2: The number of pages that can be stored for the Job Build function depends on the machine's HDD capacity and other conditions.

NETWORK-READY

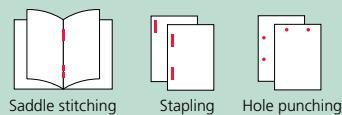
Supports Most Office Environments PRINT

- The MX-3100N/2600N works as a network printer with the latest and most commonly used operating systems and network protocols, including **IPv6**, and even in mixed OS environments. With a 64-bit, 1 GHz CPU, you get fast, powerful network printing via the 1000Base-T **Gigabit Ethernet** standard.
- The MX-3100N/2600N supports **PCL5c** and **PCL6** printer languages. For compatibility with **PostScript 3**, the MX-PKX1 PS3 Expansion Kit is available.

Polished Finishing COPY PRINT

The MX-3100N/2600N makes it easy to create professional-looking booklets. The **chapter divide** function lets you print out all chapters starting on either odd- or even-numbered pages to give documents a consistent, polished look. The newly designed **Saddle Stitch Finisher** option staples documents up to 50 pages long and can fold and staple sets of documents up to 15 pages long to make completed booklets. It also features a new **bi-folding** function that folds individual pages, up to size A3, in half—eliminating the tedious task of folding pages by hand. A space-efficient **Finisher** is also available for jobs that require only simple sorting and stapling. And, an optional **Punch Module** allows you to punch holes in documents for easy filing.

A Variety of Job Finishing Options

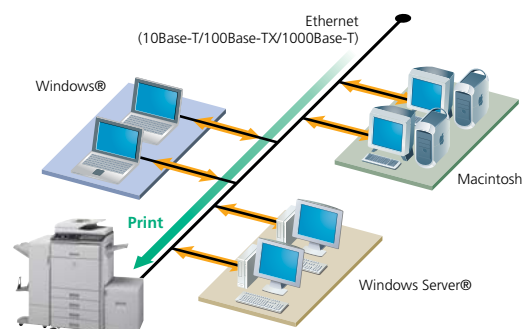
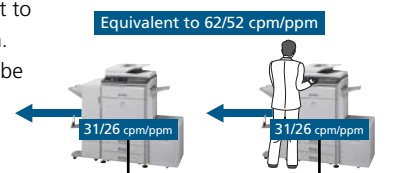


Large Paper Capacity COPY PRINT

For high-volume work, the MX-3100N/2600N can accommodate an optional 3,500-sheet large-capacity tray and stand with 2 x 500-sheet paper drawers for a total capacity of **5,600 sheets**. The **Auto Tray Switching** function automatically switches to another paper tray filled with the same size paper, allowing you to do extra-large volume jobs.

Network Tandem Function COPY PRINT

When two MX-3100N/2600Ns are connected to the same office network, you can use both simultaneously to double copying/printing output to up to **62/52 cpm/ppm**. Large-volume jobs can be completed with ease, enabling you to meet tight deadlines.



SUPERB PRINT QUALITY

Improved Imaging System

COPY
PRINT

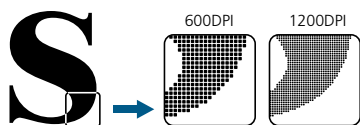
Sharp thoroughly revamped its imaging process for the MX-3100N/2600N; now a high-performance processor, a new developer, and the new **Mycrostoner-HG** (High Grade) combine to provide breathtaking image quality. The smaller particle size of Mycrostoner-HG and the developer allows for reduced graininess and clear reproduction of fine lines and halftone colours.



True 1,200 x 1,200-dpi Printing

PRINT

The MX-3100N/2600N's print engine provides razor-sharp 1,200-dpi printing—without sacrificing output speed—for ultra-clear image quality. Fine lines and small text come out crisper and easier to read.



VERSATILE

USB Memory Direct Print

PRINT

One of the two USB ports on the MX-3100N/2600N is located at the front of the MFP beneath the control panel. It comes in handy when printing data directly from USB memory devices—an indispensable function for users who are in a hurry or who want quick machine access without a PC.



Versatile Paper Handling

COPY
PRINT

The MX-3100N/2600N accommodates a wide range of paper sizes, from A5R (5 1/2" x 8 1/2") to A3 wide (12" x 18"). When using an optional finisher or exit tray, you can do A3 (11" x 17") **full-bleed printing** onto **A3-wide (12" x 18")** paper, without loss of image area. And thanks to its tandem printing method, the MX-3100N/2600N can handle heavy paper stock up to **256 g/m²**, overhead transparencies, and other types of paper, further expanding the range of printing applications.

Image Editing Functions

COPY

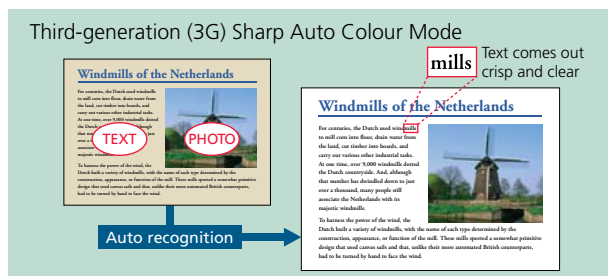
The MX-3100N/2600N includes colourful editing functions made possible by digital technology.

- **Multi-Page Enlargement** divides an image onto separate sheets for making posters up to A0 x 2 (44" x 68") in size.
 - **Image Repeat** places multiple copies of an image onto a single sheet.
 - **Mirror Image** makes a reverse image of the original.
 - **XY Zoom** adjusts the horizontal and vertical ratios independently.
 - **B/W Reverse** reverses the black and white of an image.
- Please see specifications for a list of available convenient functions.

Easy, High-Quality Copying

COPY

Because the MX-3100N/2600N features **third-generation Sharp Auto Colour Mode**, anyone—with just a push of the start button—can easily and automatically make copies that are faithful to the original. Here's how it works. **Auto Colour Selection** automatically determines whether a page is colour or B/W and selects the appropriate copy mode for that page. **Auto Colour Mode** analyses the contents of each page, distinguishing between different components, such as photos and text. This is what allows the MX-3100N/2600N to print out maps with crisp, clear text and to automatically remove the background colour on newspaper and magazine copies for clearer output. When copying in B/W, multi-level error diffusion technology provides dramatically smoother gradation in photos and subtle greyscale images.



Various Copy/Print Applications

COPY
PRINT

Copy & Print

- **Tab Copy/Print** can copy or print directly onto tabs on document separators and insert them into assigned positions.
- **Multi-Shot** copying and **N-up** printing
- **Pamphlet Style** copying/printing
- **Cover/transparency** insertion

Print

- **PDF/TIFF/JPEG/XPS Direct Print** prints PDF, TIFF, JPEG, or XPS files without using the printer driver or opening applications.
Note: Direct PDF printing requires optional MX-PKX1, and direct XPS printing requires optional MX-PUX1 and MX-SMX3. Direct printing may not support all PDF, TIFF, JPEG, and XPS formats.
- **Carbon Copy Print** mode automatically outputs multiple printouts of the same data on plain and/or coloured paper; convenient for invoices and purchase orders.
- **Form Overlay** can store office document formatting such as letterheads and overlay contents in colour, eliminating the need for pre-printed paper.
- **Barcode font** compatibility (with optional AR-PF1 Barcode Font Kit)

Copy

- **Book Copy** is convenient for compiling copies of a book or bound originals into pamphlet format.
- **Card Shot** enables one-touch copying of both sides of a card (credit cards, ID cards, etc.) onto a single page.
- **Colour Stamp** labels your copies with page numbers, the date or text such as "Urgent" in up to four different colours.
- **Mixed Size Original Copy** mode automatically distinguishes documents of mixed sizes* (such as A3/B4, B4/A4, etc.) fed through the RSPF and chooses the appropriate paper.

* Some restrictions apply when combining paper sizes of different format series.

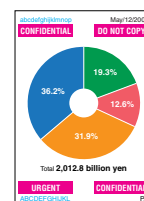




IMAGE SENDING

A3 Colour Network Scanning

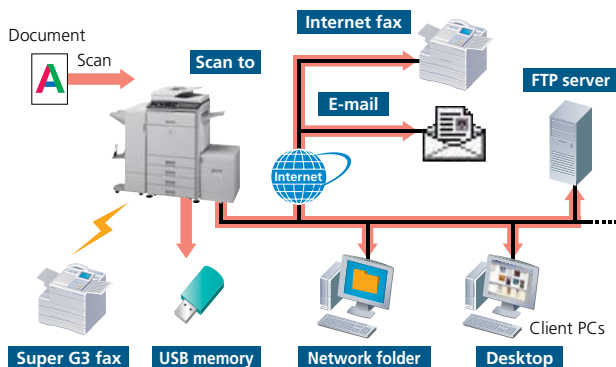
SCAN

The MX-3100N/2600N works as a **full-colour network scanner** that can be used with any Windows PC on the network. Converting any type of paper-based document, up to A3 (11" x 17") in size, into an editable digital file is as easy as making a copy. The MX-3100N/2600N supports TIFF, PDF, encrypted PDF, JPEG, and the new **XPS** (XML Paper Specification) file formats. And **Auto Colour Selection** chooses the right mode for scanning originals containing both colour and B/W pages (see page 4).

Multiple Distribution of Scanned Files

SCAN FAX

With the touch of a few buttons, you can choose different ways to distribute your scanned documents. **Scan to E-mail** sends documents as an e-mail attachment. **Scan to FTP Server** scans documents directly to an FTP server for storage. **Scan to Desktop** sends scanned documents directly to your PC desktop. **Scan to Network Folder (SMB)** sends files to a shared folder on a networked Windows PC. **Scan to USB Memory** scans documents directly to USB memory devices. And **Scan to Fax** enables conventional faxing or Internet faxing.



LDAP Support

SCAN FAX

Built-in LDAP (lightweight directory access protocol) support eliminates the need to enter or register full addresses. By entering the first few letters of the recipient's name, the MX-3100N/2600N displays a list of possible matches from your company's LDAP server. Selected addresses can be stored to the MX-3100N/2600N's address book.



High-Speed Faxing

FAX

The optional MX-FXX2 Fax Expansion Kit turns the MX-3100N/2600N into a 33.6 Kbps **Super G3 fax**. Using JBIG compression technology, the MX-3100N/2600N can send an A4 (8 1/2" x 11") size page in under 3 seconds*. Use the 100-sheet RSPF to further boost faxing efficiency. And, because **Quick On-Line Transmission** can start dialling and transmitting as soon as the first page is scanned into memory, you can send documents in **much less time**.

* Based on Sharp's standard chart with approximately 700 characters (A4 or 8 1/2" x 11" long-edge feeding) at standard resolution.

Automated Fax Finishing

FAX

The MX-3100N/2600N eliminates the need to copy and staple received faxes by hand. Simply use the Fax Output setting on the LCD control panel to designate the number of copies. With finishing options installed, the MX-3100N/2600N will even automatically staple these documents for you.

Output settings for received faxes



PC-Fax/PC-Internet Fax

FAX

Directly send a document created on your PC to a recipient's fax machine via a phone line or the Internet without printing to paper. Save time and paper costs while retaining original document quality.

Note: PC-Internet Fax requires optional MX-FWX1; PC-Fax requires MX-FXX2.

Internet Fax

FAX

Economically send and receive faxes to and from other ITU-T T-37-compliant Internet fax machines via the Internet. The MX-3100N/2600N supports **Direct SMTP**; outgoing Internet faxes do not go through your mail server, making transmission faster and cheaper.

Note: Requires optional MX-FWX1.

Paperless Faxing with Inbound Routing

FAX

Paperless faxing with inbound routing lets you check incoming faxes via e-mail before printing. It can also forward incoming faxes to an FTP server, a network folder (SMB), or a PC desktop. Files can be saved in either PDF or TIFF (single/multi).

Other Key Features

Scan & Fax

- **One-touch auto dial keys** register up to **999** numbers for frequently used destinations
- **Broadcast transmission** to up to 500 destinations
- **Programme keys** (up to 48 keys) are available to set up frequently used transmissions for instant recall
- **Easy text entry*** lets you enter addresses, file names, subject titles or messages from the LCD control panel
 - * Only addresses can be entered for faxing.
- **Mixed size original scanning** automatically distinguishes documents of mixed sizes fed through the RSPF

Fax

- **Duplex transmission/reception** sends and prints out two-sided documents
- **Flash memory backup** ensures documents remain safely backed up in memory, even in the event of a power failure
- **Rotation transmission/reception** rotates incoming and outgoing faxes to match the direction of the printing paper
- **Fax destination confirmation** allows users to reconfirm fax numbers before sending to prevent transmission errors

Note: Faxing is available in B/W only.

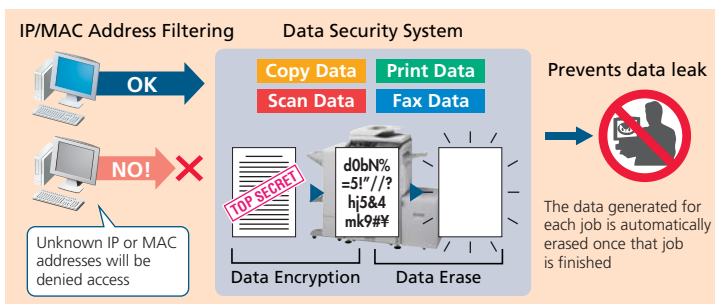
SECURITY

Industry-Leading Multi-Layered Security

With multiple levels of network and data security to cover a wide range of security needs, Sharp's industry-leading security solutions protect your business assets and bring peace of mind. The MX-3100N/2600N safeguards sensitive data with powerful, enhanced security functions that eliminate the worry of unauthorised use and guarantee greater protection for your confidential information.

Data Security Kit

Digital copier/printers or MFPs can retain hundreds of pages of confidential information from previous jobs on their hard disks or internal memory. To safeguard this information from unauthorised access, the optional **Data Security Kit** automatically **encrypts and erases** the data after each job is complete as well as data stored both on the hard disk and in the address book.

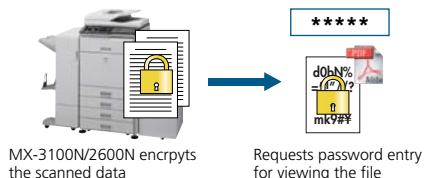


Secure Network Access

The MX-3100N/2600N's **IP/MAC address filtering** function provides highly secure operation by restricting access to the MX-3100N/2600N on your office network. Only PCs that have either their IP address or MAC (media access control) address registered are allowed to use the MX-3100N/2600N. Attempted access from an unknown IP or MAC address will be denied, preventing unauthorised use. The MX-3100N/2600N also supports the **IEEE 802.1X** standard for port-based network access control, which blocks all access from unauthorised devices.

Encrypted PDF with Password Protection

To prevent unauthorised viewing of confidential image data, the MX-3100N/2600N enables users to password protect and encrypt PDF data. By setting a password when scanning, users can transmit a PDF over the network in encrypted format. Then, after transmission, viewers will only gain access to the encrypted PDF after successfully re-entering the chosen password.



Print Hold and Confidential Print

To keep others from seeing confidential documents as they are being printed out, the MX-3100N/2600N's **Print Hold** function stores print data on its hard disk and withholds output until the user executes a print command from the control panel. For added security, the **Confidential Print** function requires the user to enter in a PIN (personal identification number) at the machine before printing can begin.

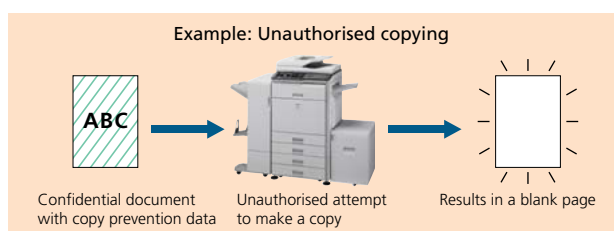
Secure Sockets Layer

SSL (secure sockets layer) enables the encryption of data communications to prevent data leakage through the network when printing via IPP, browsing secure Web pages (HTTPS), or communicating via e-mail (SMTP and POP3) or FTP (FTPS).

Document Control Function

Document Control prevents unauthorised copying, scanning, faxing, and filing of confidential documents. This is how it works: the MX-3100N/2600N embeds copy prevention data onto a document when it is first copied or printed. It will then detect this data the next time someone tries to make a copy of the document. Any unauthorised attempts to copy a Document Controlled-document will simply be cancelled or result in the output of a blank page.

Note: Requires optional Data Security Kit. May not work for certain types of documents or paper.



User Authentication

The MX-3100N/2600N prevents unauthorised use by requiring **passwords** for machine access. The MX-3100N/2600N can register up to 1,000 users in **three access levels** as Administrator, User, and Guest. And it can also designate to which function user authentication applies. For example, the MX-3100N/2600N can be set to allow B/W copying by all users while restricting colour copying to designated users.



User authentication

IPv6 and IPsec Support

The MX-3100N/2600N supports IPv6, the next-generation Internet protocol. An obligatory part of IPv6 is IPsec (IP Security), a set of protocols for securing Internet protocol (IP) communications. IPsec encrypts and authenticates traffic between specified parties, giving IPsec-compatible products an extremely high level of network security.

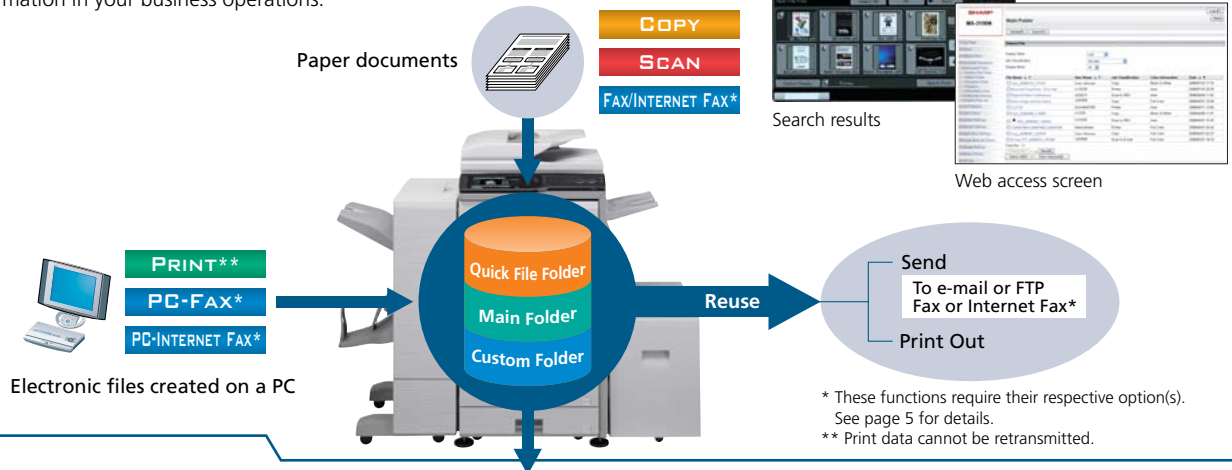
DOCUMENT MANAGEMENT

Document Management on the Hard Disk

You can save processed job data in designated folders on the MX-3100N/2600N's built-in hard disk, making it easy to instantly recall saved documents or jobs for printing and sending at a later time. This contributes greatly to efficient sharing and distribution of information in your business operations.

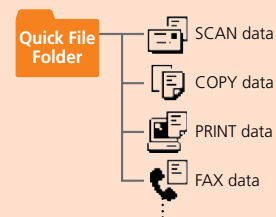
Easy Access to Stored Files

Documents that are stored on the hard disk can be quickly searched and accessed from the control panel display or through a Web browser.



Quick Filing

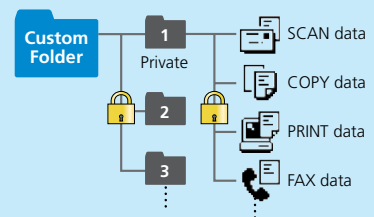
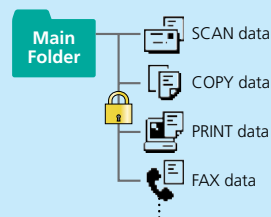
Up to **1,700 pages** or 1,000 files*¹ that have been copied, printed, scanned, or faxed*² can be stored by job on the hard disk in a Quick File Folder. You can easily reuse saved data without having to reload or rescan the original.



Advanced Filing Function

Up to **5,500 pages** or 3,000 files*¹ that have been copied, printed, scanned, or faxed*² can be stored by job on the hard disk in up to 1,000 folders with customised names and locations. Enhanced security features require users to enter a 5- to 8-digit password to access secure folders, protecting your sensitive data. Storage options include:

- **Main Folder** – You can store processed files by user name in the main public folder and share them across the workgroup. Any file name and a PIN code can be assigned to each saved job.
- **Custom Folder** - Up to 500 private folders (named as desired) can be created within the Custom Folder. When saving a file in a private folder, any file name can be assigned. A PIN code can be applied to both private folders and files.



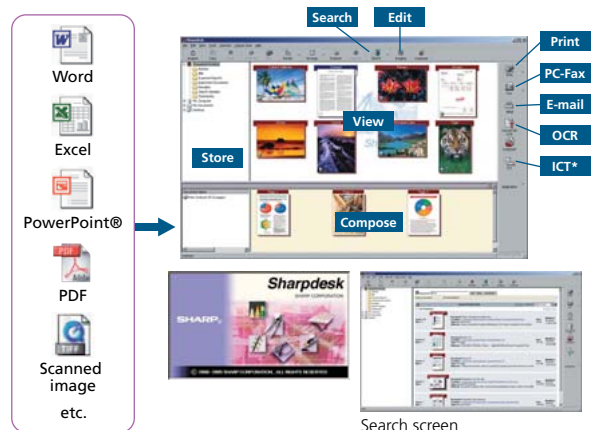
*1: Measured using Sharp's standard chart (A4 with 6% coverage, B/W). The Quick File Folder shares the HDD with the Job Build function; up to 12GB of data storage is available when using both functions. The storage capacity will be less for colour pages.

*2: For fax and Internet fax jobs, only transmitted data (not received faxes) can be saved in the Document Filing function.

Sharpdesk for Total Document Management

Sharpdesk is an original Sharp application that provides integrated desktop management of documents in over **200 file formats**, including scanned paper-based documents and those created with popular applications such as Word. It allows you to organise, edit, search, and distribute your documents, all with simple drag-and-drop operation.

- Intuitive desktop display features **thumbnail** viewing
- Sharpdesk Imaging provides **annotation** tools for paper-free proofreading
- Sharpdesk **Composer** combines different types of files into a single document
- **Optical character recognition** converts documents into editable text files
- **Output zone** distributes files to e-mail, printers, and other applications
- **File search** allows searching by file name, keyword, or thumbnail



* Image Compression Tool for converting images into high-compression PDF files



DEVICE MANAGEMENT

Integrated Device Management

The MX-3100N/2600N allows for easy programming of complex settings and makes it possible for a system administrator to manage multiple devices from a single location. The result is minimum time and effort and maximum work efficiency.

Web-Based System Settings

Administrators can configure system settings such as address book control, document filing management, and user control (accounting) from either over the network or from the control panel of the MX-3100N/2600N.



Web-based device management

User Control

The MX-3100N/2600N has capabilities to **restrict machine access and usage**. Easily manage overall running costs by setting access rules through a Web browser to limit or restrict functions, such as the printing out or copying of large-volume colour documents.

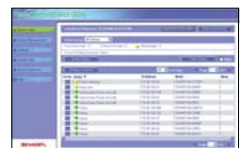
- Authority Groups – Use of each function can be restricted individually.
- User control and account – Up to 1,000 password-protected user accounts can be created for customised access. Accounts can be set up for individuals, groups or departments, in conjunction with the authority group setting. Maximum limits for printing or copying pages can be set for each account.

Remote Diagnosis

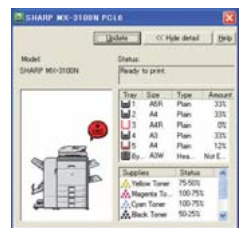
The MX-3100N/2600N can be monitored remotely through a Web browser. In the event of a problem, such as a low amount of toner, an alert is displayed on the Web page. And, the E-Mail Status and Alert function generates e-mail messages to notify the administrator when action or maintenance is required.

Network Utility Software

- **Printer Administration Utility** makes printer networks easier to manage by allowing administrators to customise monitored items and view settings such as the IP address directly from their PC through a standard Web browser.
- If the MX-3100N/2600N is low on paper or toner, the **Printer Status Monitor** will alert you in the form of easy-to-understand graphics, allowing you to avoid problems before they arise.



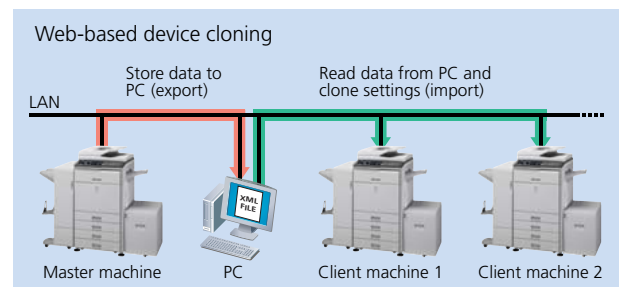
Web-based PAU 4.0



Printer Status Monitor

Device Cloning

Machine settings can be copied conveniently to another MX-3100N/2600N via a Web browser in XML format, making it easy to clone machines in a networked environment. With Device Cloning, the administrator no longer needs to set up individual machines one by one, thereby making his/her job a lot easier.



Remote Operation

With the MX-3100N/2600N's new Remote Operation function, the same control panel screen found on the MFP can be displayed on the screen of a remote, office-networked PC, allowing the MFP to be operated via that PC. This function can, for example, enable the administrator to guide an MFP user in need of help through necessary procedures. It also allows users, such as the physically challenged, who might have difficulty accessing the MFP control panel, to operate the MFP remotely, via the PC.



ENVIRONMENT- & USER-FRIENDLY

ENVIRONMENTALLY ADVANCED

Environmentally Conscious Supplies

Integrating Sharp's environmentally advanced supplies, the MX-3100N/2600N takes ecological performance to a whole new level. Mycrostoner-HG offers a significantly **lower consumption rate** than conventional toner, while the **longer-life photoconductor** delivers higher performance than previous models.

Environmentally Conscious Design

- With a standby power consumption of less than **1W** in night-time fax reception mode, the MX-3100N/2600N leads the industry in energy savings for colour MFPs.

- Conforming to the **Energy Star** programme, an international system identifying energy-efficient products, the MX-3100N/2600N has two levels of **energy-saving modes** to reduce or shut off electricity after a period of inactivity. And to further cut back on running costs, by pressing the **manual energy save key** after a job is finished, the MX-3100N/2600N immediately enters pre-heat mode.



- The MX-3100N/2600N conforms to standards set for the Nordic Swan European environmental label.
- In **support of the RoHS directive**, which restricts the use of hazardous substances, Sharp has fully eliminated harmful lead and chromium in all MX-3100N/2600N parts and materials.

EASY OPERATION

8.5-Inch Touch-Screen LCD

The MX-3100N/2600N's logically designed control panel features a wide, clear, W-VGA-resolution touch-screen LCD with easy-to-follow guidance. For example, when adjusting staple/sort finishing or making pamphlets, the LCD displays step-by-step instructions to guide you through the necessary procedures. Pushing the **Home** button, even in the middle of an operation, takes you back to the Start screen. And you can quickly access the most frequently used functions and settings by programming them into **My Menu**.



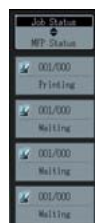
Home screen



Staple/sort finishing

Job Status Screen

- Whether printing or copying, the control panel displays a list of all jobs, showing you at a glance the jobs in progress and the position of your job in the queue. And, with a few quick touches of the LCD screen, the **Priority Printing** function lets you easily **change the job queue order** or delete jobs that are no longer needed.
- On the right side of the LCD, you'll find a simplified version of the Job Status display. This lets you quickly confirm the first four jobs in the queue without having to go to the Job Status screen. The display also provides a quick rundown on MFP system status.



Job status

Thumbnail Display and Previews

Making the search for files easier and more convenient than ever, thumbnails and up-close previews of Document Filing data files, in addition to conventional file names, can be displayed on the MX-3100N/2600N's LCD control panel. And to help users decide which documents to print out, the LCD can also display thumbnails and previews of incoming faxes and Internet faxes.



Sharp OSA (Open Systems Architecture)

The MX-3100N/2600N supports the Sharp OSA 3.0* development platform. This innovative, third-generation technology allows users to interact with critical business and network applications and/or external account software right from the LCD control panel, offering a new realm of control and convenience. And since Sharp OSA 3.0 utilises industry-standard network protocols, such as XML and SOAP, the MX-3100N/2600N can easily integrate with document management systems, enterprise resource planning software, workflow applications, and more.

* Requires optional MX-AMX2 and/or MX-AMX3.

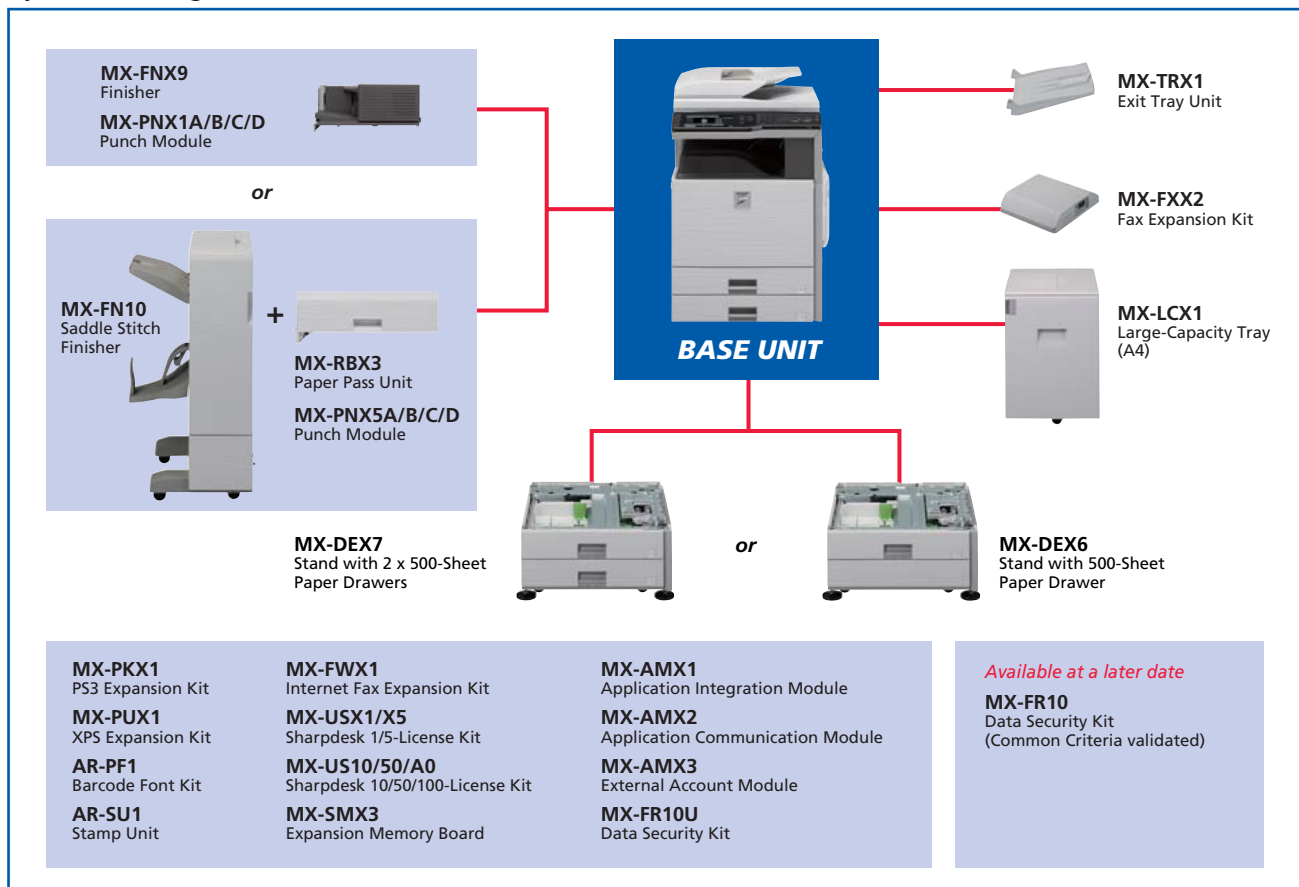


Note: The screen shown above is just a sample. Screen layouts and user interfaces can be specifically designed to accommodate customised application programs.



OPTIONS

System Configuration



Certain options may not be available in some areas.

Specifications for Options

MX-FNX9 Finisher

Paper size	Non offset Offset/staple	A3W to A5R (12" x 18" to 5 1/2" x 8 1/2R") A3 to B5 (11" x 17" to 8 1/2" x 11R")
Paper capacity (max.)		500 sheets (A4 or smaller), 250 sheets (B4 or larger)
Stapling capacity		50 sheets (A4 or smaller), 30 sheets (B4 or larger)
Staple position		3 locations (front, rear or both)

MX-FN10 Saddle Stitch Finisher

Paper size	Non offset Offset/staple	A3W to A5R (12" x 18" to 5 1/2" x 8 1/2R") A3 to B5 (11" x 17" to 8 1/2" x 11R")
Paper capacity (max.)	Offset tray	1,000 sheets (A4 or smaller, except A5R), 500 sheets (A5R, B4 or larger)
	Saddle stitch tray	10 sets of 11–15 sheets, 15 sets of 6–10 sheets, 20 sets of 1–5 sheets
	Stapling capacity	50 sheets (A4 or smaller), 25 sheets (B4 or larger)
Staple position		3 locations (front, rear or both)

Punch Modules

Model name	For the MX-FNX9	MX-PNX1A	MX-PNX1B	MX-PNX1C	MX-PNX1D
	For the MX-FN10	MX-PNX5A	MX-PNX5B	MX-PNX5C	MX-PNX5D
Number of holes		2	3	4	4 (wide)
Paper weight		55 to 209 g/m ² *1			

*1: Guaranteed punchable weight is 55 to 128 g/m².

MX-DEX6 Stand with 500-Sheet Paper Drawer

Paper size	A3 to B5R (11" x 17" to 7 1/4" x 10 1/2R")
Paper capacity	500 sheets (80 g/m ²)

MX-DEX7 Stand with 2 x 500-Sheet Paper Drawers

Paper size (upper and lower tray)	A3 to B5R (11" x 17" to 7 1/4" x 10 1/2R")
Paper capacity (upper and lower tray)	500 sheets each (80 g/m ²)

MX-LCX1 Large-Capacity Tray

Paper size	A4, B5 (8 1/2" x 11")
Paper capacity	3,500 sheets (80 g/m ²)

MX-FXX2 Fax Expansion Kit

Compression method	MH/MR/MMR/JBIG
Communication protocol	Super G3/G3
Modem speed	33,600 bps to 2,400 bps

Sharpdesk 3.2 System Requirements

CPU and memory	Depends on operating system used
Hard disk	300MB or more available space (including sample image files and help files)
Monitor	SVGA resolution or better and capable of displaying more than 256 colours (True Color recommended)
Supported OS	Windows® 98 Second Edition, Windows® Me, Windows® 2000 Professional, Windows® XP Professional, Windows® XP Home Edition, Windows Vista®*2
Network protocols	TCP/IP (using Network Scanner Tool)

*2: Windows Vista 64 bit is supported as 32-bit compatible mode. Sharpdesk Composer does not support Windows Vista 64 bit.

SPECIFICATIONS (tentative)

General	
Type	Desktop
Engine speed (colour & B/W)	Max. 31/26 cpm/ppm (A4, 8 1/2" x 11", long-edge feeding)
Paper size	Max. A3 wide (12" x 18"), min. A5R (5 1/2" x 8 1/2R") Note: Optional finisher or exit tray required for output of A3-wide (12" x 18") documents
Paper capacity (80 g/m ²)	Standard: 1,100 sheets (two 500-sheet trays and 100-sheet multi-bypass tray) Maximum: 5,600 sheets
Paper weight	Tray: 60 g/m ² to 209 g/m ² (16 to 110 lbs) Large-capacity tray: 60 g/m ² to 105 g/m ² (16 to 28 lbs) Multi-bypass tray: 55 g/m ² to 256 g/m ² (13 to 140 lbs)
Warm-up time*1	Less than 60 sec.
Memory	Copier memory: Standard 1,024MB, max. 2,048MB Printer memory: Standard 512MB, max. 1,536MB 80GB HDD*2
Power requirements	Rated local AC voltage $\pm 10\%$, 50/60 Hz
Power consumption (max.)	1.84 kW (220 to 240V), 1.44 kW (110 to 127V)
Dimensions (W x D x H)	620 x 695 x 950 mm (24 13/32" x 27 3/8" x 37 25/64")
Weight	Approx. 112 kg (247 lbs)
Features	Card shot, edge/centre erase, job build, document filing, user authentication (1,000 accounts), toner save mode, pre-heat/auto power shut-off modes

Copier	
Original paper size	Max. A3 (11" x 17")
First copy time*3	Full colour: 8.9 sec. B/W: 6.0 sec.
Continuous copy	Max. 999 copies
Resolution	Scan (colour): 600 x 600 dpi Scan (B/W): 600 x 600 dpi, 600 x 400 dpi, 600 x 300 dpi*4 Print: 600 x 600 dpi
Gradation	Equivalent to 256 levels
Zoom range	25 to 400% (25 to 200% using RSPF) in 1% increments
Preset copy ratios	Metric: 10 ratios (5R/5E), inch: 8 ratios (4R/4E)
Features*5	Auto paper selection (mixed/random size feeding), auto magnification selection, paper type selection, auto tray switching, rotation copy, electronic sorting, network tandem copy, book copy, margin shift, dual page copy, multi-shot (4-in-1, 2-in-1), cover/transparency/tab page insertion, pamphlet copy, 2-sided copy orientation change, XY zoom, B/W reverse, mirror image, duplex copy, reserved copy, job programme, image repeat, irregular original/paper size input, stamps (date, page number, text, stamp), multi-page enlargement, tab copy, centering, proof copy, 3G Sharp auto colour mode, auto colour selection, auto calibration

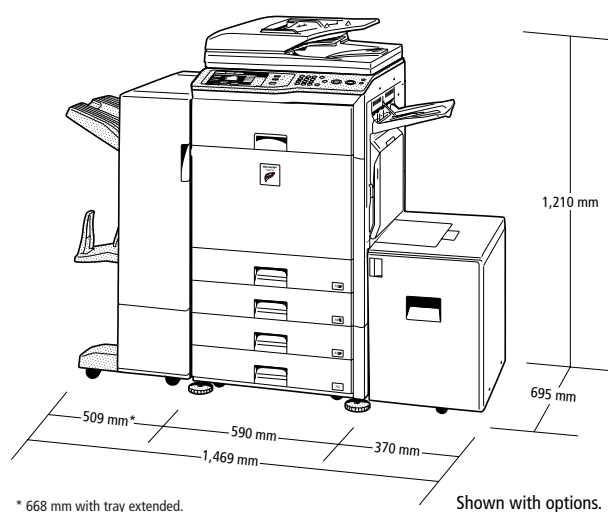
Network Scanner	
Scan method	Push scan (via control panel), pull scan (TWAIN-compliant application)
Resolution	Push scan: 100, 200, 300, 400, 600 dpi Pull scan: 75, 100, 150, 200, 300, 400, 600 dpi 50 to 9,600 dpi via user setting
File formats	TIFF, PDF, encrypted PDF, JPEG (colour only), XPS*6
Scanner utility	Sharpdesk
Scan destinations	Scan to e-mail, desktop, FTP server, network folder (SMB), USB memory
Features	Internet fax*7 (supports direct SMTP), PC-Internet fax transmission*7, 3G Sharp auto colour mode, mixed size original scanning, LDAP support, direct entry (address, subject, message), 999 one-touch dials, 500 group dials, 48 job programmes, broadcasting, long original scanning (max. 1,000 mm)*8, auto colour selection

- *1: At rated voltage, 23°C (73.4°F). May vary depending on operating conditions.
 *2: HDD capacity depends on procurement and sourcing status.
 *3: Long-edge feeding of A4 (8 1/2" x 11") sheets from 1st paper tray, using document glass, without Auto Colour Selection and Auto Colour mode, polygon motor running. May take longer when taking a copy for the first time immediately after turning the machine on. *4: Not available when using RSPF.
 *5: Some features require option(s).
 *6: To view XPS files on PCs not running Windows Vista, you must have the XPS Viewer application installed.
 *7: Optional MX-FWX1 required.
 *8: B/W documents only, scanned at under 400-dpi resolution. Max. 800 mm for Internet faxing or when scanning at 600 x 600-dpi resolution.
 *9: Measured using Sharp's standard chart (A4 with 6% coverage, B/W). The Quick File Folder shares the HDD with the Job Build function; up to 12GB of data storage is available when using both functions. The storage capacity will be less for colour pages.
 *10: Optional MX-PKX1 required for Mac OS and EtherTalk.
 *11: PS requires optional MX-PKX1. XPS requires optional MX-PUX1 and MX-SMX3 (1GB).
 *12: Some features are not available according to the printer driver used.
 *13: Based on Sharp's standard chart with approx. 700 characters (A4 or 8 1/2" x 11" long-edge feeding) at standard resolution in Super G3 mode, 33,600 bps, JBIG compression.

- Design and specifications are subject to change without prior notice.
- Windows, Windows NT, Windows Server, and Windows Vista are registered trademarks of Microsoft Corporation in the United States and/or other countries. All other brand names and product names may be trademarks or registered trademarks of their respective owners.
- The Energy Star logo is a certification mark and may only be used to certify products that have been determined to meet the Energy Star programme requirements. Energy Star is a US registered mark. The Energy Star guidelines apply to products only in the US, Europe, Australia, New Zealand, and Japan.

Document Filing	
Document filing capacity	Main and custom folders: 38GB, 5,500 pages*9 or 3,000 files Quick file folder: 12GB, 1,700 pages*9 or 1,000 files
Stored jobs*5	Copy, print, scan, fax transmission
Storage folders	Quick file folder, main folder, custom folder (max. 1,000 folders)
Confidential storage	Password protection
Network Printer	
Resolution	1,200 x 1,200 dpi, 600 x 600 dpi
Interface	USB 2.0 10Base-T/100Base-TX/1000Base-T
Supported OS*10	Windows NT® 4.0 SP5 or later, Windows Server® 2003/2008, Windows® 98/Me/2000/XP, Windows Vista® Mac OS 9.0 to 9.2.2, Mac OS X 10.2.8, 10.3.9, 10.4 to 10.4.11, 10.5 to 10.5.1
Network protocols*10	TCP/IP (IPv4, IPv6), IPX/SPX (NetWare), NetBEUI, EtherTalk (AppleTalk)
Printing protocols	LPR, Raw TCP (port 9100), POP3 (e-mail printing), HTTP, Novell Printserver application with NDS and Bindery, FTP for downloading print files, EtherTalk printing, IPP
PDL (emulation)	Standard: PCL 6/5c emulation Option*11: PS3 emulation, XPS
Available fonts	80 fonts for PCL, 136 fonts for PS3 emulation
Features*5 *12	Network tandem print, RIP Once/Print Many, job retention (print hold, proof print, confidential print), direct PDF/TIFF/JPEG/XPS printing, carbon copy print, duplex print, font/form download, offset output, printer administration utility and status monitor, pamphlet style, IP/MAC address filtering, port/protocol management, binding edge, N-up (2/4/6/8/9/16), paper/output tray selection, cover insertion, transparency interleave, fit to page, watermarks, form overlay, auto configuration, barcode font compatibility, tab print, poster print, secure network communications (SSL and IPsec [LPD])

B/W Facsimile (optional MX-FXX2 required)	
Compression method	MH/MR/MMR/JBIG
Communication protocol	Super G3/G3
Transmission time	Less than 3 seconds*13
Modem speed	33,600 bps to 2,400 bps with automatic fallback
Transmission resolution	From Standard (203.2 x 97.8 dpi) to Super Fine (406.4 x 391 dpi)
Recording width	A3 to A5 (11" x 17" to 5 1/2" x 8 1/2")
Memory	8MB flash memory
Grey scale levels	Equivalent to 256 levels
Features	Duplex transmission/reception, quick on-line transmission, error correction mode, 999 one-touch dials, 500 group dials, LDAP support, 48 job programmes, broadcasting number registration, F-Code compatibility (confidential, relay broadcast), polling, memory transmission/reception, auto reduction (transmission/reception), rotation transmission/reception, print actual size, 2-in-1 transmission, long original transmission (max. 1,000 mm), PC-Fax transmission, timer transmission, activity report, anti-junk fax, dual page scan, mixed size original scanning, inbound routing to e-mail/FTP server/network folder (SMB)/PC desktop/group



* 668 mm with tray extended.

Shown with options.

SHARP

Distributed by:



Printed with VOC (volatile organic compound)-free ink